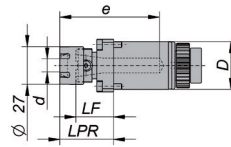


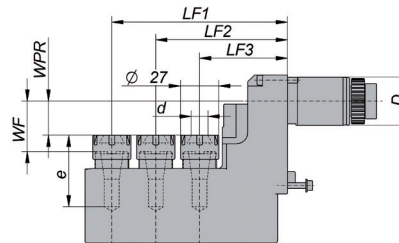
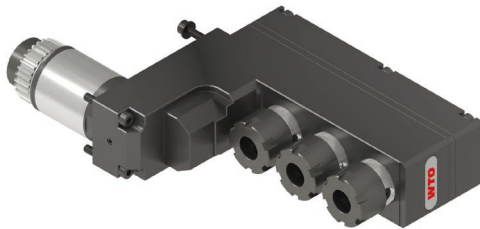
## Cross drill/milling unit



Item No.	Machine Interface			Tool Interface	Dimensions/technical data						
	D	Machine(s)	Drive		d	LPR	LF	e	n max. [rpm]	M [Nm]	i n1:n2
NF16-DNE-ST34A-038-E-A	34	SB 12/20 R SR 20/32 JII / 20R IV SV 20 R SW 20 SX 38	Spur gear	ER-16NF	0.5-10	38.5	27	71.5	8000	20	1:1

Dimensions in mm. Including clamping nut and plug screw ER-16NF.

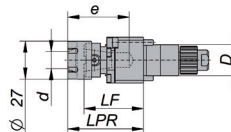
## 3-spindle Face drill/milling unit



Item No.	Machine Interface			Tool Interface	Dimensions/technical data									
	D	Machine(s)	Drive		d	LF1	LF2	LF3	WPR	WF	e	n max. [rpm]	M [Nm]	i n1:n2
NF16-DNI-ST34A-062-E-X3-A	34	SB 12/20 R SR 20/32 JII / 20R IV	Spur gear	ER-16NF	0.5-10	124	93	62	24	35.5	50.5	8000	6	1:1

Dimensions in mm. Including clamping nut and plug screw ER-16NF.

## Face drill/milling unit for sub spindle



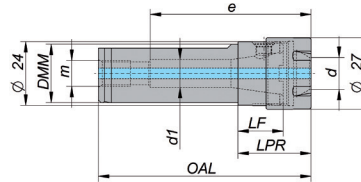
Item No.	Machine Interface			Tool Interface	Dimensions/technical data						
	D	Machine(s)	Drive		d	LPR	LF	e	n max. [rpm]	M [Nm]	i n1:n2
NF16-DNE-ST22A-053-E-A	22	SB 12/20 R SR 20/32 JII SV 20 R SW 12 R II	Spur gear	ER-16NF	0.5-10	53.5	42	43.5	8000	10	1:1
NF16-DNE-ST22B-053-E-A	22	SR 20R IV SW 20	Spur gear	ER-16NF	0.5-10	53.5	42	43.5	8000	10	1:1




Dimensions in mm. Including clamping nut and plug screw ER-16NF.

## Cylindrical shank holder

with cylindrical shank and flat.

For flexible use of ER collets and nanoFlex® adapters in boring bar and sleeve holders.



Size	Item No.	DMM	d min.	d max.	LF	LPR	OAL	d <sub>1</sub>	m	e			
ER-16NF	NF16-SSH-022-A	22	0.5	10	17	28.5	80.0	10.5	G <sup>1</sup> / <sub>8</sub> "	60.5	NF16-SCN-A	107520005	NF16-SPL-A

Dimensions in mm. Including clamping nut and plug screw ER-16NF.

## Starter Set

NF16-DNE-ST34A-038-E-SK-A

Includes:

- 1 NF16-DNE-ST34A-038-E-A Cross drill/milling unit
- 1 NF16-SAD-ER11-A Collet chuck adapter with ER11M
- 1 NF16-SDR-A Drive ring (incl. NF16 Clamping screw)
- 1 NF16-STW-A Torque screwdriver
- 1 107516002 Spanner wrench SW19
- 1 107520005 Spanner wrench ER-16NF
- 1 107511005 Spanner wrench ER11M

